



GMT MONTHLY MEMBERSHIP PROGRESS REPORT

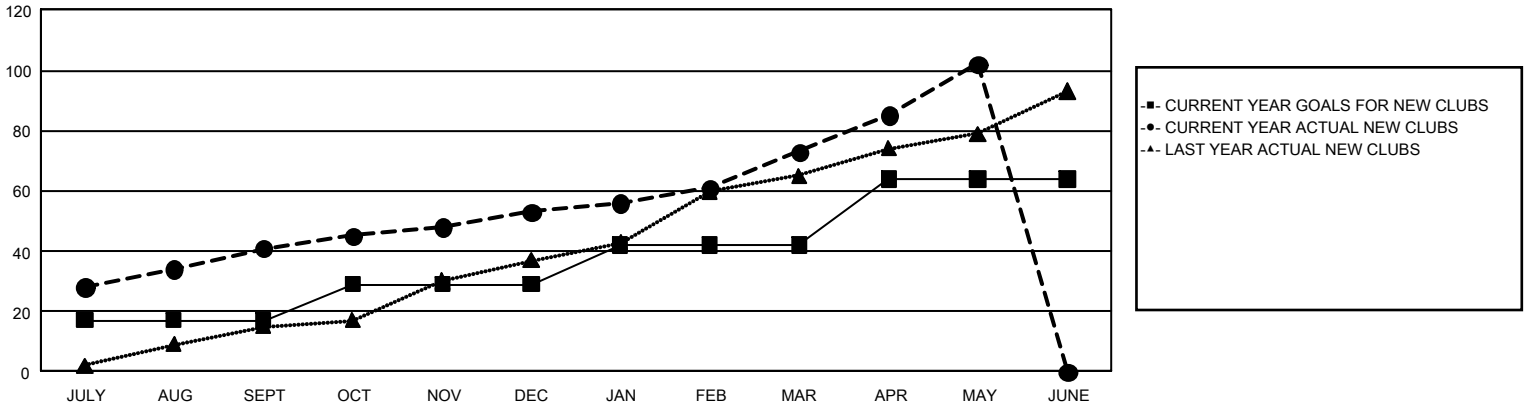
GAT Constitutional Area 7

Results as of: 5/31/2026

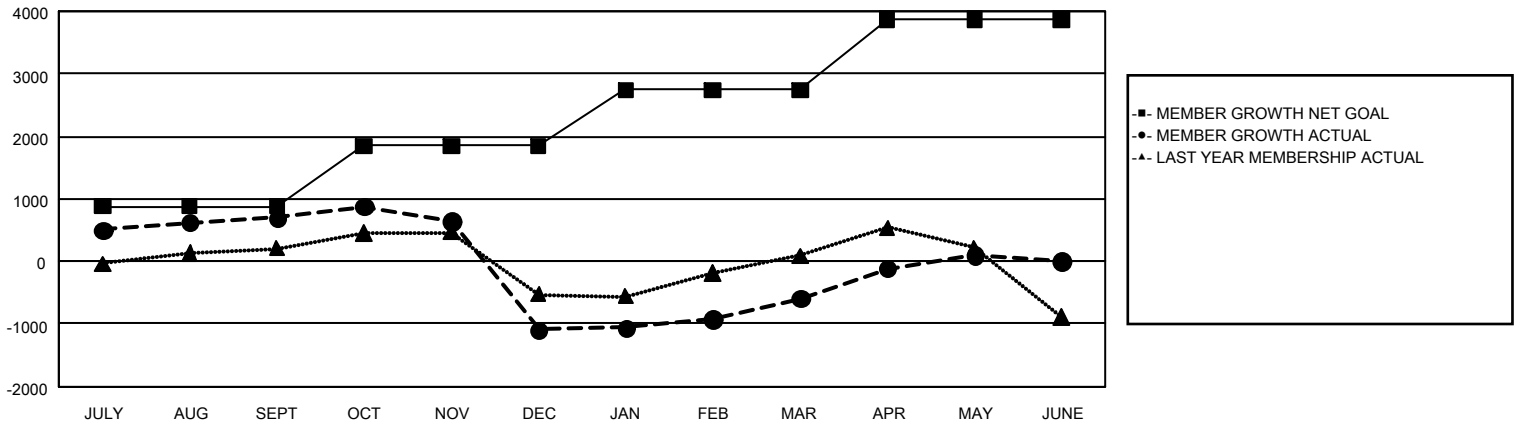
REPORT DOES NOT INCLUDE CLUBS IN UNDISTRICTED AREAS.

Clubs				Members			
RESULTS FOR 2025-2026				RESULTS FOR 2025-2026			
QUARTER	NEW CLUB GOAL	NEW CLUBS	DROPPED CLUBS	QUARTER	MEMBER GROWTH NET GOAL	MEMBER GROWTH ACTUAL	DROPPED MEMBERS ACTUAL (including transfers)
JULY/AUG/SEPT	17	41	14	JULY/AUG/SEPT	877	2,556	1,489
OCT/NOV/DEC	12	12	23	OCT/NOV/DEC	969	1,615	3,177
JAN/FEB/MAR	13	20	16	JAN/FEB/MAR	898	1,760	1,059
APR/MAY/JUNE	22	29	0	APR/MAY/JUNE	1,134	1,936	1,084

GOALS AND ACTUAL NEW CLUBS CUMULATIVE



GOALS AND ACTUAL MEMBERS CUMULATIVE



DROPPED CLUBS: 53	1,239 CLUBS OF 2,024 ADDED 1 OR MORE NEW MEMBERS	<u>GENDER DISTRIBUTION</u> MALE 23,987 (54.36%) FEMALE 20,108 (45.57%)
<u>DROPPED MEMBERS</u> DECEASED 438 CLUB CANCELLED 381 OTHER 5,964 <hr/> TOTAL 6,783	CLICK HERE FOR CUMULATIVE MEMBERSHIP DATA	TOTAL FAMILY UNIT MEMBERS 7,305 FAMILY MEMBERS PAYING HALF DUES 4,017